



THE PUPPET CONNECTION



**YOUTH EXCHANGE FOR CREATIVITY
AND SOCIAL DIALOGUE**

01.08 - 09.08.2026
(1 & 9 August Travel days)

Perma Halos , Romania



PROJECT OBJECTIVES

- **Develop creative expression and storytelling skills through puppet theatre**
- **Encourage active participation and teamwork through collaborative performance roles.**
- **Explore youth and community-related social themes through artistic expression.**
- **Promote reflection on learning outcomes and the use of theatre for social change in local communities.**

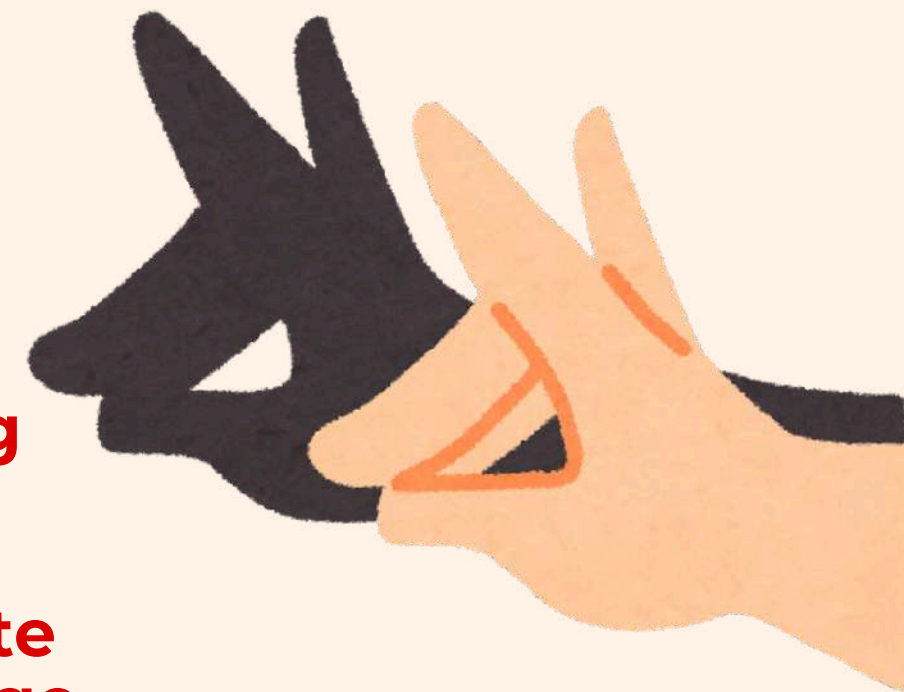


PROJECT OBJECTIVES

Community Building with Puppets is a youth exchange that uses puppet theatre as a non-formal education method to support communication, cooperation, and active participation among young people. Participants work in international teams to create puppets and stories inspired by community life, emotions, and social topics relevant to youth. Through creative workshops, teamwork, and reflection activities, young people develop social and communication skills while learning how art can be used as a tool for building inclusive and connected communities.

ACTIVITIES:

- **The activity will include a combination of interactive workshops, creative group work, and practical theatre sessions.**
- **Participants will take part in ice-breaking and team-building activities to create a safe and collaborative learning environment.**
- **Through workshops on puppet theatre, storytelling, non-verbal communication, and improvisation, they will develop ideas and work in groups to create scripts, characters, and puppets.**
- **The programme will include hands-on sessions for designing puppets and rehearsing scenes, leading to final puppet theatre performances presenting themes relevant to youth and community life.**
- **Reflection sessions and group discussions will allow participants to evaluate their learning outcomes, explore how theatre can contribute to social change, and consider how similar activities could be implemented in their local communities.**



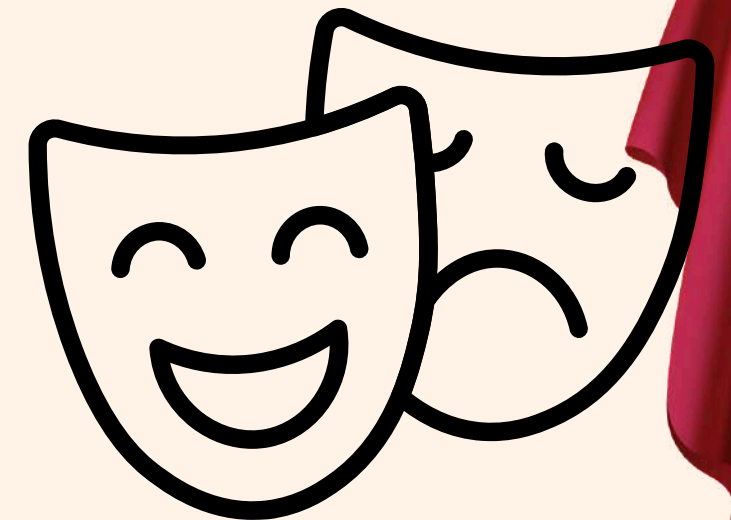


TIMELINE



WE'RE LOOKING FOR:

- **Youth, youth leaders, 18+ motivated to join this experiential learning, 5–6 participants per country;**
- **Willingness to explore youth and community-related social themes through artistic expression, self-awareness, and social impact;**
- **Good working knowledge of English;**
- **Able to engage in a reflective and experiential learning processes.**



THE TRAINING TEAM



Toni Lyubenova

Toni is an experienced youth trainer and project manager working in the field of non-formal education and international youth work. She specializes in creative learning methods, including storytelling, theatre, and artistic expression, to support personal development and intercultural learning. Antoniya has facilitated several Erasmus+ youth exchanges and training activities, helping young people develop communication skills, creativity, and teamwork in intercultural environments.



Lulu Trasnea

Lulu is a multidisciplinary theatre artist, puppeteer, and educator, as well as a psychologist in training, with over 12 years of experience on stage and in working with diverse age groups. She specializes in creative learning through theatre, including improvisation, dance, storytelling and animation techniques, supporting personal development and artistic expression. Lulu has collaborated with both public institutions and independent projects across Romania and internationally, and is actively involved in non-formal education through workshops, courses, Erasmus projects and creative camps.

VENUE



ACCOMODATION

PERMA HALOS, BACAU, ROMANIA



TRANSPORT OPTIONS

The airports that would be suitable for your travel are:

- Bucharest Otopeni (Henri Coanda) airport
- Brasov - Ghimbav airport

(Optional, will be taken 25 euros from your budget travel):

The transport from the Brasov to the venue and back will be organised by us and you will receive more details 5 days before.



TRAVEL BUDGET

Travel distance	Green travel	Non-Green travel
10 – 99 km	56 EUR	28 EUR
100 – 499 km	285 EUR	211 EUR
500 – 1999 km	417 EUR	309 EUR
2000 – 2999 km	535 EUR	395 EUR
3000 – 3999 km	785 EUR	580EUR



PARTNERS



ROES
GREECE



Casa da Juventude
de Amarante
PORTUGAL



Active Zone
Outdoor
CYPRUS



Dare To Scale
Academy
BULGARIA



AYUNTAMIENTO DE ALTEA
SPAIN



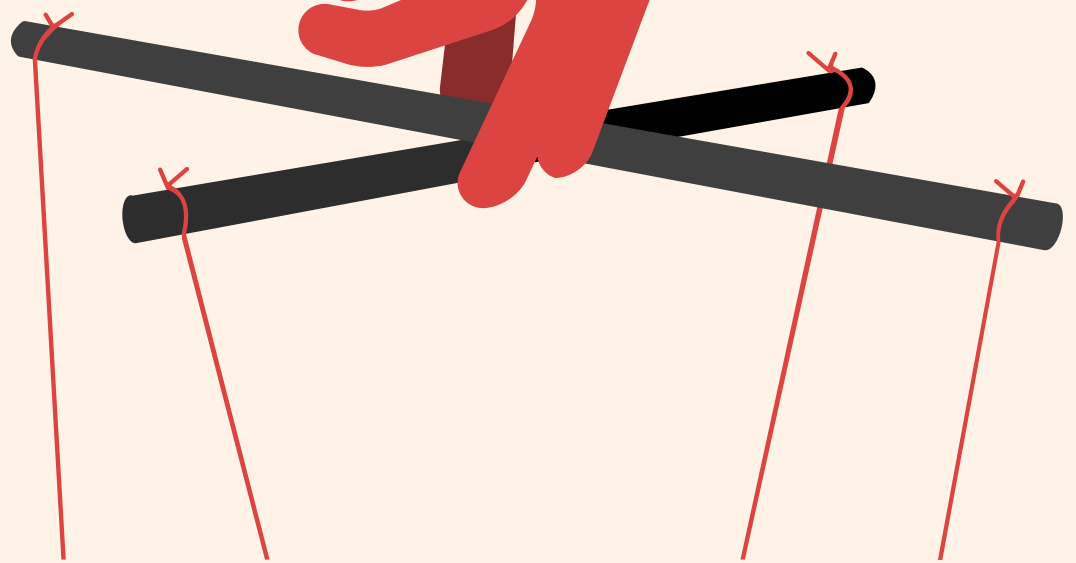
CSF
ROMANIA



WHAT TO PREPARE

- **Hat, sun protection**
 - **Comfortable clothes + a warm sweater for the evenings**
 - **Own towels and toiletries**
 - **European Health Card**
 - **Hiking Shoes & Flip Flops**
 - **Swimming suit (there is a nearby jacuzzi-river)**
 - **Resource management mindset (quick shower, no food waste, no material waste)**
 - **Stories to share!**
 - **Special medicine (if it is the case)**
-
- *The local currency is called LEI.*
 - *4.9 lei = 1 euro approximately*
 - *You can usually pay most of the things by card in Romania*





You Can Apply **HERE**

Application Form





Co-funded by
the European Union



CONTACT DETAILS



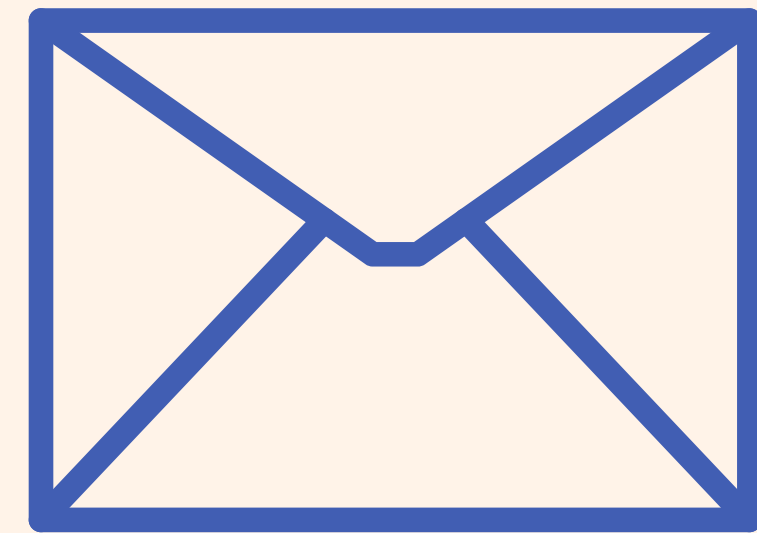
FACEBOOK

COPIII IN SANUL FAMILIEI



INSTAGRAM

FRIENDS OF ROMANIAN CHILDREN



ALINA@INNOEDULAB.EU

